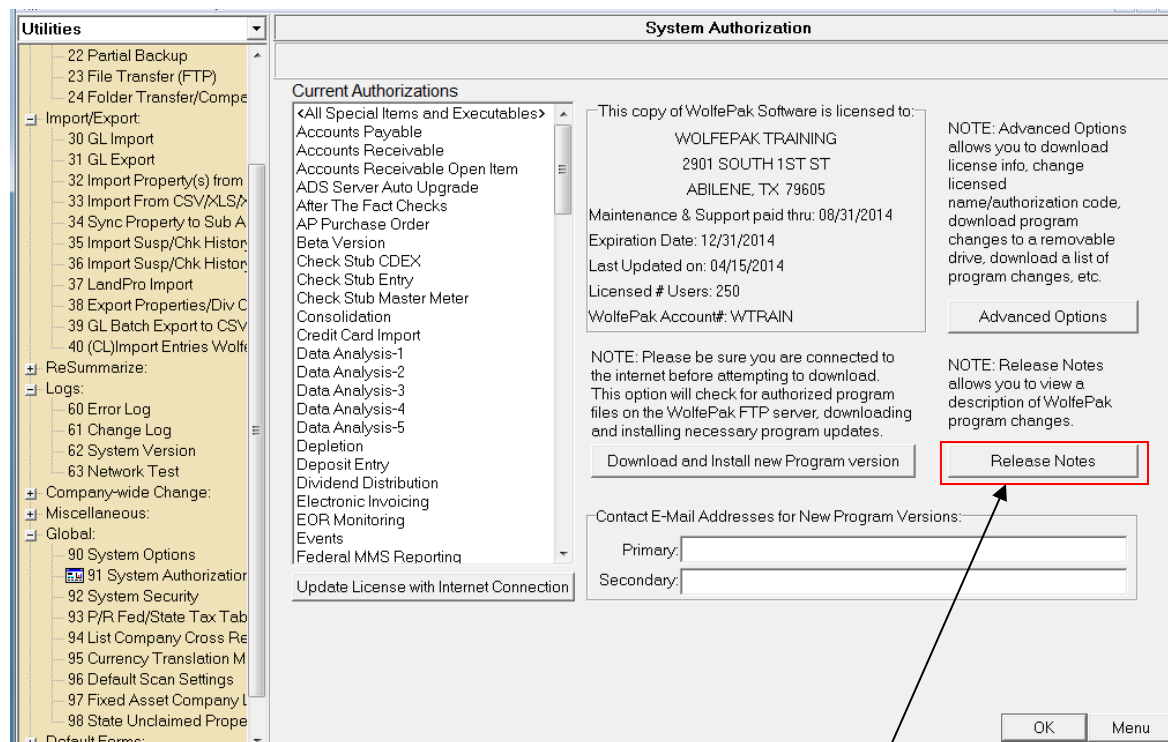


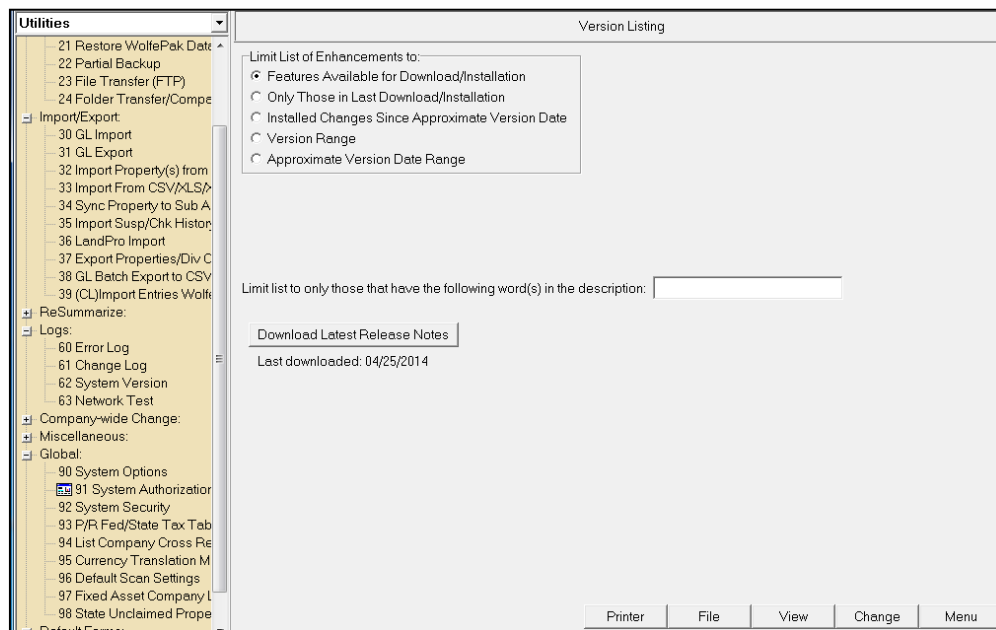


What is available in the latest download of WolfePak?

Check WolfePak's Release Notes to see the software changes made to the various WolfePak modules.



Go to Utilities / Global / #91- System Authorization. Select the “Release Notes” button.



Filter the release notes by any of the following options found in the “Limit List of Enhancements to:” box at the top of the Version Listing screen.

Features Available for Download/Installation	This option will list the newest software features currently available for download that you don't not have yet. This option works by looking at your current version# and comparing it to the version # currently posted on the WolfePak FTP site (you will need to click the option “Download the Latest Release Notes” before this feature will work).
Only Those In Last Download/Installation	This option will list the software features that were already installed as part of the last download on your system. This feature will not work if you download a new update 2 or more times in rapid succession with the same version #.
Installed Changes Since Approximate Version Date	This option will list software features that were available as of an approximate version date to be viewed. It says “approximate” because version dates do not always coincide with “calendar” dates. When this option is selected, an additional field will become available-“Changes Since Approximate Date.”
Version Range	Selecting this option will list software features that occurred between two different version numbers (range of #'s). This is an advanced feature that most users will not be able to utilize unless they specifically know what version #'s (range) they

	want to see the features listed for. Every time a user downloads a new version the version # changes and the user will not have visibility for specific version #'s from the past (historical).
Approximate Version Date Range	This option will list software features to be viewed within a specified approximate date range. It says "approximate" because version dates do not always coincide with "calendar" dates. This feature is helpful if you haven't updated in a few months and you'd like to see what major changes have occurred "recently". For example, in May 2014 you'd like to see all the changes WolfePak has done in 2014. Enter 01/01/14 thru 05/31/14 just to see the major release notes for the year 2014.

Note: Running the option for "Installed Changes Since Approximate Version Date" or "Approximate Version Date Range" will not take into consideration minor versions.

Additionally, WolfePak can filter the desired option by a key word entered into the "Limit list to only those that have the following word(s) in the description:" field. For example, entering the word "gas" into this field will limit the chosen option to only those features that contain the word "gas."

The "Download Latest Release Notes" button will download notes new releases since the last download date displayed below the button.

After selecting the desired options, click on the "View" button at the bottom of the screen. The system will display the Release notes in a report format alphabetical by module name.